



TRODELVY®
sacituzumab govitecan-hziy
180 mg for injection

When the everyday
means everything,
start planning today.

Please see Important Safety Information on pages 9-10.
Please see Important Facts about TRODELVY, including Important Warning.

Not an actual patient.

WHAT IS TRODELVY?

TRODELVY® (sacituzumab govitecan-hziy) is a prescription medicine used to treat adults with triple-negative breast cancer (negative for estrogen and progesterone hormone receptors and HER2) that has spread to other parts of the body (metastatic) or cannot be removed by surgery, and who have received two or more prior treatments, including at least one treatment for metastatic disease.

It is not known if TRODELVY is safe and effective in people with moderate or severe liver problems or in children.

IMPORTANT SAFETY INFORMATION

TRODELVY can cause serious side effects, including low white blood cell count and diarrhea:

- **Low white blood cell count (neutropenia)** which is common and can sometimes be severe and lead to infections that can be life-threatening or cause death. Your healthcare provider should check your blood cell counts during treatment. If your white blood cell count is too low, your healthcare provider may need to lower your dose, give you a medicine to help prevent low blood cell count with future doses of TRODELVY, or in some cases may stop TRODELVY. Your healthcare provider may need to give you antibiotic medicines if you develop fever while your white blood cell count is low. **Call your healthcare provider right away if you develop any of the following signs of infection:** fever, chills, cough, shortness of breath, or burning or pain when you urinate.
- **Severe diarrhea.** Diarrhea is common and can be severe. Severe diarrhea can lead to loss of too much body fluid (dehydration) and kidney problems. Your healthcare provider should monitor you for diarrhea and give you medicine as needed to help control it. If you lose too much body fluid, your healthcare provider may need to give you fluids and electrolytes to replace body salts. If you develop diarrhea during your treatment with TRODELVY, your healthcare provider should check to see if it may be caused by an infection. Your healthcare provider may decrease your dose or stop TRODELVY if your diarrhea is severe and cannot be controlled with anti-diarrheal medicines.
 - **Call your healthcare provider right away** the first time that you get diarrhea during treatment with TRODELVY; if you have black or bloody stools; if you have symptoms of dehydration, such as lightheadedness, dizziness, or faintness; if you are unable to take fluids by mouth due to nausea or vomiting; or if you are not able to get your diarrhea under control within 24 hours.

Do not receive TRODELVY if you have had a severe allergic reaction to TRODELVY.

Ask your healthcare provider if you are not sure.



 **TRODELVY**[®]
sacituzumab govitecan-hziy
180 mg for injection

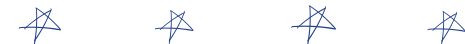


Please see Important Safety Information on pages 9-10.

Please see **Important Facts**, including Important Warning.

Beginning my next step with TRODELVY

When the cancer had progressed on prior treatments, I didn't know if there were other treatment options for metastatic triple-negative breast cancer. That scared me. Then, my oncologist told me about TRODELVY, a different type of treatment called an antibody-drug conjugate (ADC). After our discussion, I was excited to include it as a part of my treatment plan. I made some notes about TRODELVY, so I can tell others to discuss it with their oncologist too.



It's great knowing that my healthcare provider is there when I need help deciding which options are best for me based on my needs. I have to take treatment at my own pace, but knowing that I was a part of the decision to begin TRODELVY feels like I have some control as I move forward with mTNBC.

mTNBC is my diagnosis.
Sisterhood is my life.



Not actual patients.

I really like that TRODELVY is designed for patients like me

So my doctor said that TRODELVY is a type of treatment called an antibody-drug conjugate. It's designed to work differently than traditional chemotherapy.

You'll want to know about Trop-2

If I don't mention Trop-2, the rest is hard to explain, so I'll tell you what I learned. With certain types of cancers like mTNBC, tumor cells often have a higher amount of a protein on the surface called Trop-2 than noncancer cells. TRODELVY is designed to seek out Trop-2.

pronounced like "trope"

My doctor mentioned this so I feel like I should mention it too.



Information from laboratory studies suggest that this is how TRODELVY works. The clinical benefit of these observations is unknown.

IMPORTANT SAFETY INFORMATION (cont'd)

Allergic and infusion-related reactions which can be serious and life-threatening. Tell your healthcare provider or nurse right away if you get any of the following symptoms during your infusion of TRODELVY or within 24 hours after: swelling of your face, lips, tongue, or throat; hives; skin rash, itching, or flushing of your skin; fever; difficulty breathing or wheezing; lightheadedness, dizziness, feeling faint, or pass out; or chills or shaking chills (rigors).



Please see full Important Safety Information on pages 9-10. Please see **Important Facts**, including Important Warning.

Seeks out, breaks in, and destroys



Seeks out

The antibody in TRODELVY finds and attaches to the Trop-2 protein.



Breaks in

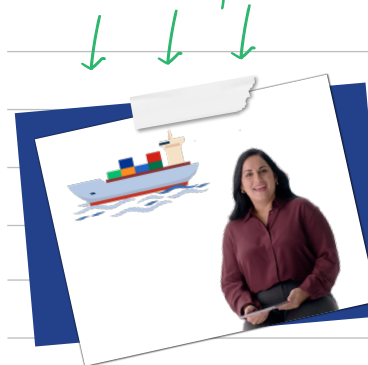
Once attached, TRODELVY enters the cancer cell.



Destroys

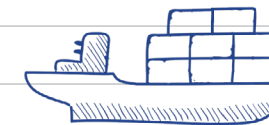
Once TRODELVY enters, the anticancer medicine is released, killing the cell.

This video explains it all



Too science-y? To help you remember, think of TRODELVY as a cargo ship. Might seem odd, but it will make sense after you watch the video.

TRODELVY is like a cargo ship!



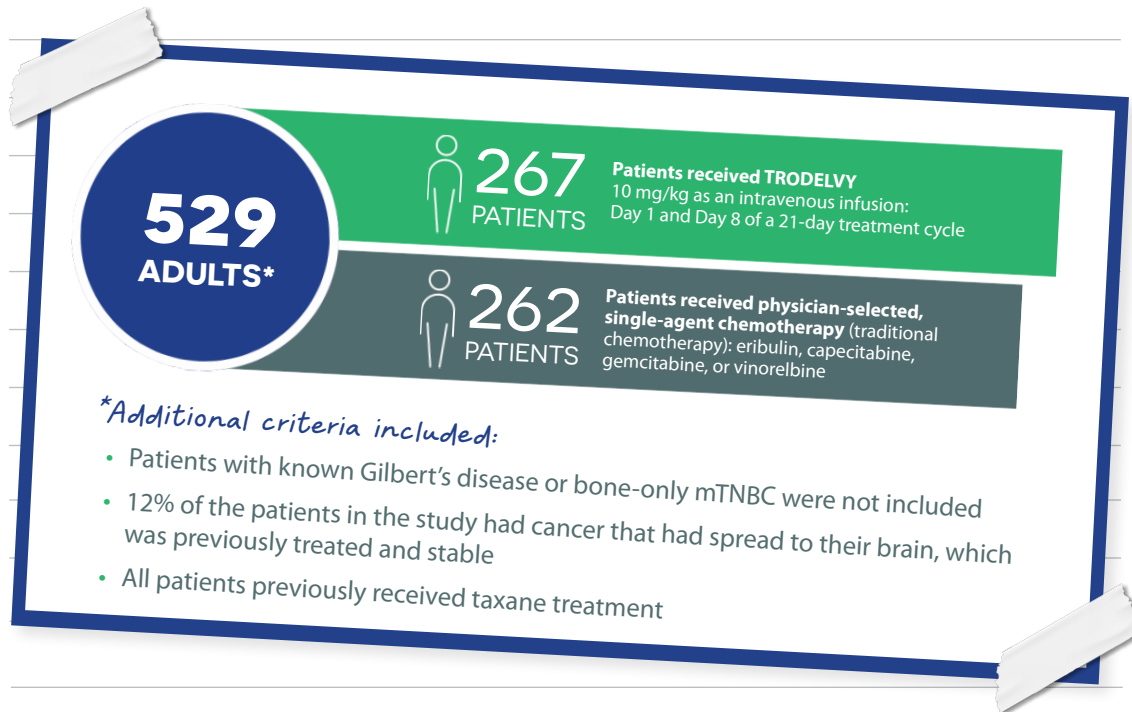
IMPORTANT SAFETY INFORMATION (cont'd)

Nausea and vomiting are common with TRODELVY and can sometimes be severe. Before each dose of TRODELVY, you will receive medicines to help prevent nausea and vomiting along with medicines to take home with instructions about how to take them. Call your healthcare provider right away if you have nausea or vomiting that is not controlled with the medicines prescribed for you. Your healthcare provider may decide to decrease your dose or stop TRODELVY if your nausea and vomiting is severe and cannot be controlled with anti-nausea medicines.

Notes on the clinical trial

In case you're like me and like to do research on clinical trials, here's what I found:

- In the clinical trial, TRODELVY was tested against traditional chemotherapy
- TRODELVY was studied in a large phase 3 trial in adults with TNBC that had spread to other parts of the body or could not be removed by surgery → metastatic
- All patients had previously received 2 or more therapies for breast cancer, at least one of them for metastatic disease

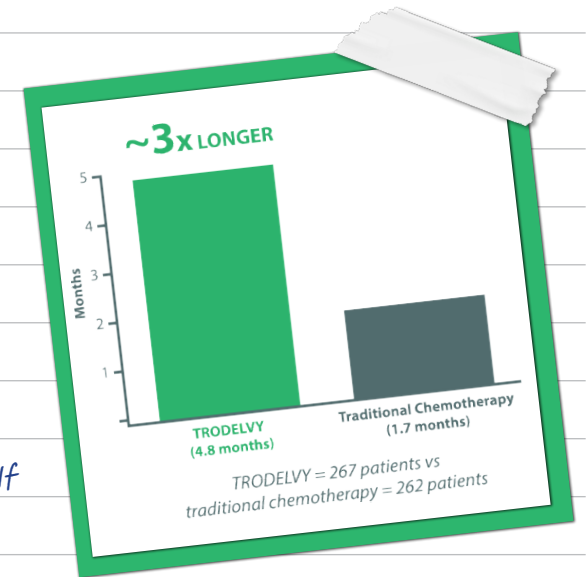


The power to slow the progression of mTNBC

TRODELVY helped some people live without cancer progression nearly 3x longer than those receiving traditional chemo.

Let me break it down for you:

- Those receiving TRODELVY lived with no signs of cancer progression for almost 5 months
- My doctor called this "median progression-free survival," which PFS is how long a treatment stops growth or spread of mTNBC in half of the people who take it.



Results shown are in all patients (with and without brain cancer). Individual results may vary and TRODELVY may not work for everyone. Traditional chemotherapy consisted of single-agent chemotherapy including eribulin, capecitabine, gemcitabine, and vinorelbine.

IMPORTANT SAFETY INFORMATION (cont'd)

Before receiving TRODELVY, tell your healthcare provider about all of your medical conditions, including if you:

- have been told that you carry a gene for UGT1A1*28, which can increase your risk of getting side effects with TRODELVY, especially low white blood cell counts, with or without a fever, and low red blood cell counts.
- have liver problems.
- are pregnant or plan to become pregnant. TRODELVY can harm your unborn baby. Your healthcare provider should check to see if you are pregnant before you start receiving TRODELVY. TRODELVY may cause fertility problems in females, which could affect your ability to have a baby. Talk to your healthcare provider if fertility is a concern for you.

Develop a plan for possible side effects

I'll be real with you—TRODELVY may come with side effects.

Some of these side effects are like those you may have had while taking chemotherapy for mTNBC.

The severity is different for everyone, but if you experience any side effects, contact your healthcare provider immediately.

Some side effects may require medical attention.

The most common side effects of TRODELVY include:

- Decreased white blood cell (lymphocyte and leukocyte) and red blood counts
- Feeling tired or weak (fatigue)
- Hair loss
- Constipation
- Increased sugar levels in the blood
- Decreased protein levels (albumin) in the blood
- Decreased appetite
- Changes in kidney function test
- Increased levels of enzyme called alkaline phosphatase in the blood (test for liver or bone problems)
- Decreased levels of magnesium, potassium, and sodium in the blood

Having a better idea of what to expect with treatment for metastatic TNBC may help you feel more in control of your plan. You can work with your doctor to proactively manage some side effects.

In the trial, TRODELVY also caused serious side effects, including neutropenia, severe diarrhea, serious infusion-related reactions and severe allergic reactions, which could be life-threatening, as well as nausea and vomiting.

For those who took TRODELVY in the trial:

- Serious adverse reactions occurred in 27% of patients
- Serious adverse reactions in >1% of patients included neutropenia (7%), diarrhea (4%), and pneumonia (3%)
- 5% of patients stopped treatment due to side effects
- Side effects leading to a treatment interruption of TRODELVY occurred in 63% of patients
- Doses were reduced for 22% of patients to help manage side effects

These are not all of the possible side effects of TRODELVY. Tell your healthcare provider about any side effects that bother you or do not go away. Call your healthcare provider for medical advice about side effects. You may report side effects to the FDA at 1-800-FDA-1088.

Learn from my friend, Deltra



Deltra recently started receiving TRODELVY for mTNBC and decided to talk about her experience. It may help to have another perspective.



Check out her Q&A by going [here](#)

WHAT IS TRODELVY?

TRODELVY® (sacituzumab govitecan-hziy) is a prescription medicine used to treat adults with triple-negative breast cancer (negative for estrogen and progesterone hormone receptors and HER2) that has spread to other parts of the body (metastatic) or cannot be removed by surgery, and who have received two or more prior treatments, including at least one treatment for metastatic disease.

It is not known if TRODELVY is safe and effective in people with moderate or severe liver problems or in children.

IMPORTANT SAFETY INFORMATION

TRODELVY can cause serious side effects, including low white blood cell count and diarrhea:

- **Low white blood cell count (neutropenia)** which is common and can sometimes be severe and lead to infections that can be life-threatening or cause death. Your healthcare provider should check your blood cell counts during treatment. If your white blood cell count is too low, your healthcare provider may need to lower your dose, give you a medicine to help prevent low blood cell count with future doses of TRODELVY, or in some cases may stop TRODELVY. Your healthcare provider may need to give you antibiotic medicines if you develop fever while your white blood cell count is low. **Call your healthcare provider right away if you develop any of the following signs of infection:** fever, chills, cough, shortness of breath, or burning or pain when you urinate.
- **Severe diarrhea.** Diarrhea is common and can be severe. Severe diarrhea can lead to loss of too much body fluid (dehydration) and kidney problems. Your healthcare provider should monitor you for diarrhea and give you medicine as needed to help control it. If you lose too much body fluid, your healthcare provider may need to give you fluids and electrolytes to replace body salts. If you develop diarrhea during your treatment with TRODELVY, your healthcare provider should check to see if it may be caused by an infection. Your healthcare provider may decrease your dose or stop TRODELVY if your diarrhea is severe and cannot be controlled with anti-diarrheal medicines.
 - **Call your healthcare provider right away** the first time that you get diarrhea during treatment with TRODELVY; if you have black or bloody stools; if you have symptoms of dehydration, such as lightheadedness, dizziness, or faintness; if you are unable to take fluids by mouth due to nausea or vomiting; or if you are not able to get your diarrhea under control within 24 hours.

Do not receive TRODELVY if you have had a severe allergic reaction to TRODELVY. Ask your healthcare provider if you are not sure.

Allergic and infusion-related reactions which can be serious and life-threatening. Tell your healthcare provider or nurse right away if you get any of the following symptoms during your infusion of TRODELVY or within 24 hours after: swelling of your face, lips, tongue, or throat; hives; skin rash, itching, or flushing of your skin; fever; difficulty breathing or wheezing; lightheadedness, dizziness, feeling faint, or pass out; or chills or shaking chills (rigors).

IMPORTANT SAFETY INFORMATION (cont'd)

Nausea and vomiting are common with TRODELVY and can sometimes be severe. Before each dose of TRODELVY, you will receive medicines to help prevent nausea and vomiting along with medicines to take home with instructions about how to take them. Call your healthcare provider right away if you have nausea or vomiting that is not controlled with the medicines prescribed for you. Your healthcare provider may decide to decrease your dose or stop TRODELVY if your nausea and vomiting is severe and cannot be controlled with anti-nausea medicines.

Before receiving TRODELVY, tell your healthcare provider about all of your medical conditions, including if you:

- have been told that you carry a gene for UGT1A1*28, which can increase your risk of getting side effects with TRODELVY, especially low white blood cell counts, with or without a fever, and low red blood cell counts.
- have liver problems.
- are pregnant or plan to become pregnant. TRODELVY can harm your unborn baby. Your healthcare provider should check to see if you are pregnant before you start receiving TRODELVY. TRODELVY may cause fertility problems in females, which could affect your ability to have a baby. Talk to your healthcare provider if fertility is a concern for you.
 - Females who can become pregnant should use effective birth control during treatment and for 6 months after your last dose of TRODELVY. Talk to your healthcare provider about birth control choices that may be right for you during this time. Tell your healthcare provider right away if you become pregnant during treatment with TRODELVY.
 - Males with a female partner who can become pregnant should use effective birth control during treatment and for 3 months after your last dose of TRODELVY.
- are breastfeeding or plan to breastfeed. It is not known if TRODELVY passes into your breastmilk and can harm your baby. Do not breastfeed during treatment and for 1 month after your last dose of TRODELVY.

Tell your healthcare provider about all the medicines you take, including prescription and over-the-counter medicines, vitamins, and herbal supplements. Certain medicines may affect the way TRODELVY works.

The most common side effects of TRODELVY include decreased white blood cell (leukocyte and lymphocyte) and red blood cell counts, feeling tired or weak, hair loss, constipation, increased sugar levels in the blood, decreased protein levels (albumin) in the blood, decreased appetite, changes in kidney function test, increased levels of enzyme called alkaline phosphatase in the blood (test for liver or bone problems), and decreased levels of magnesium, potassium, and sodium in the blood.

These are not all of the possible side effects of TRODELVY. Call your doctor for medical advice about side effects. You may report side effects to FDA at 1-800-FDA-1088.

Please see [Important Facts](#), including [Important Warning](#).

TRODELVY Offers Financial Access and Support

- Get assistance with insurance questions regarding benefits and coverage
- Receive financial support guidance, including out-of-pocket cost assessments
- Find alternate assistance options that are right for you

For additional information, contact a TRODELVY ACCESS SUPPORT Case Manager
Monday-Friday, 9 AM–7 PM EST at 1-844-TRODELVY (1-844-876-3358), option 2.

Sign up on [TRODELVY.com](https://trodelvy.com) to receive TRODELVY resources to help you with your plan:

- Get a free planner to track and plan your day-to-day activities
- Learn more with informational emails and resources about TRODELVY



To enroll, text **JOIN** to **94404**.*

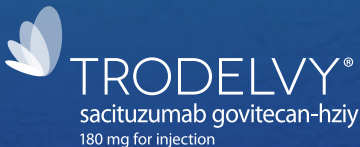
Receive extra support over text, including appointment reminders, inspirational quotes, and information to help you prepare for visits with your healthcare team.

** Message and data rates may apply. Check with your mobile service provider. Message frequency will be based on your selections. Text **HELP** for help with the program. Text **STOP** to stop receiving messages. See Terms and Conditions at bit.ly/3Aob7tE. By initiating a text message, you agree to receive automated text messages from Gilead. You can unsubscribe at any time. You represent that you are the subscriber of the number provided and 18 or older. You must notify Gilead immediately if you relinquish the number provided. Consent is not required as a condition of purchasing any products or services.*

Have more questions about TRODELVY? Talk to your doctor & get answers here:



Please see full Important Safety Information on pages 9-10.
Please see Important Facts, including Important Warning.



TRODELVY, the TRODELVY logo, GILEAD, and the GILEAD logo are trademarks of Gilead Sciences, Inc., or its related companies. All other marks are the property of their respective owners.

© 2023 Gilead Sciences, Inc. All rights reserved. US-TROC-0150 02/23